



CASE OVERVIEW: CONGENITALLY MISSING LATERAL INCISOR REPLACEMENT

Products used: Allovance® Hybrid

This case involves a 32-year-old female patient presenting for replacement of congenitally missing maxillary lateral incisors. Clinical challenges included insufficient mesio-distal arch length, a thin alveolar ridge due to absent natural eruption, and a high smile line with elevated aesthetic expectations.

TREATMENT DECISION

Due to the rudimentary ridge and limited space, a staged approach was taken. Orthodontic intervention with clear aligners and temporary anchorage devices was initiated to create adequate space for implant placement and optimise soft tissue positioning prior to augmentation.

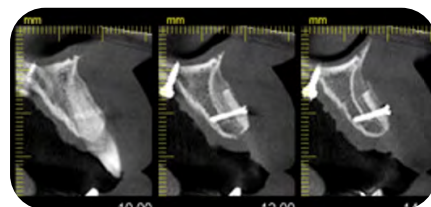
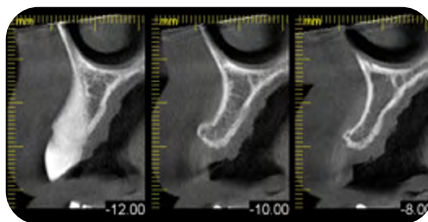
SURGICAL PROCEDURE

Alveolar ridge augmentation was performed using the shield technique, combining an autogenous cortical block graft harvested from the ramus with Allovance® Hybrid graft material, layered between the block and native alveolus. The graft was stabilised with a retention screw and covered using a collagen membrane to support soft tissue healing.

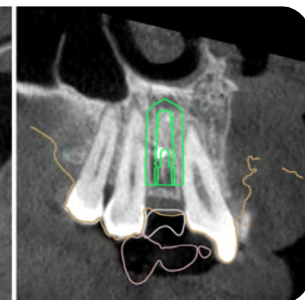
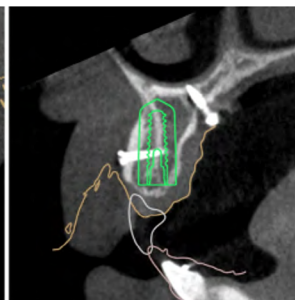
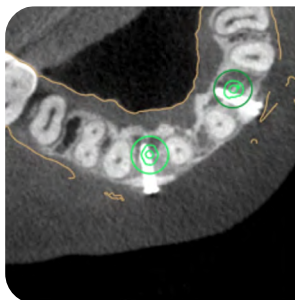
After 5 months of healing, CBCT imaging confirmed integration of the Allovance®-filled space and consolidation of the grafted site. Two 3.5 × 11 mm implants were placed via a minimal access approach and immediately restored with provisional crowns.

POST-OPERATIVE OUTCOME

Implants remained stable throughout healing and were restored with final crowns at the 6 month mark. The final result demonstrated excellent aesthetic integration with healthy peri-implant tissues, meeting the patient's expectations for both function and appearance.



5 months post-op CBCT



5 months post-op implant planning

